

## 55% Cellulose+45% Polyester Laminated Nonwoven SMT Cleaning Wipe Stencil Roll

### Product Details

Material	55%Cellulose+45%Polyester
Weight	68gsm
Size	As your demand
Color	White
Core	Plastic/paper
MOQ	100 rolls
Sample	Free sample
Port	Shanghai port

### Feature

1. [High absorbent](#)
2. Softness
3. Tough and anti-pull
4. Clean and perform well
5. Anti-static
6. Size and package can be customized as your requirement
7. [Suitable to different SMT printing machines](#)

### Application

- 1.Lint-free wipes in the electronic industry and purified laboratory
- 2.Optic equipments manufacturing, light fiber production
- 3.Printing industrial SMT steel net wiping and precise equipments wiping
- 4.Food processing and medical area
- 5.Mechanically manufacturing

## 55% Cellulose+45% Polyester Laminated Nonwoven SMT Cleaning Wipe Stencil Roll





## SMT Stencil Roll Material

55% wood pulp & 45% polyester



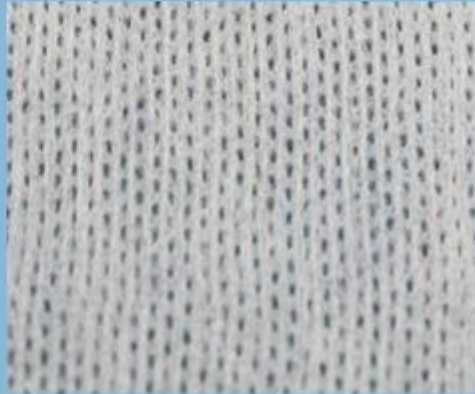
viscose & polyester / parallel



100% polypropylene



viscose & polyester / mesh





# YICHEN

DIGITAL PRODUCTS FACTORY



Our Team



Factory



## HOW TO BUY TRADE FLOW



## Trade Assurance

**TRADE WITH CONFIDENCE,  
CREDIBLE AND RELIABLE**

Your payment is protected 100% of the Trade Assurance Order Amount if the product quality is not to your satisfaction or if the order is not shipped on time.





### About customer service

If your inquiry didn't be replied in time, maybe because of large amount of consulting, please wait patiently, or maybe system problems, your inquiry was lost etc. If the time is too long, Please contact other lights on customer service, or login back Wangwang, then consult, please forgive any inconvenient by this.



### About after-sale

In the process of selling, if clients find quality problems in products, clients can note us, we'll take great care in performing this matter, the cost paid by us; if we find serious quality problems and can't be remedy, clients have right to return quality problems products to us, we must return the cost of the products.



### About shipping

Sample lead time: 1-3 days; Mass order production: 7-12 days or negotiated . (By air or by sea depends on clients' choice)



Tel: 86-512-50313419  
Mob: 86-15895659543  
Fax: 86-512-57336236  
Email: yc@yichenwipe.cn

Contact Us  
Go to the home

**WELCOME TO VISIT OUR FACTORY!**