

□□ □□ [smt](#) □□□□ □□ □□□□ □

□□ □□ □□

□□	55% □□ □□ + 45% □□□□□
□□	□□□
□□	□□□ □□□
□□□	□
□□	560 gsm, 68 gsm
□□	□□□□/□□
□□	□□ □□
□□	□□ □□

□□

1. □□□ □□□ □□ □□.
2. □□□ □□□ □□□□ □□, □ □□ □□ □ □ □ □□□ □□□ □□ □□  
UR3.SMT □, □□□ □□, □□□ □ □□, pcb □□, □□□, □□ □□ □□, □□ □□
4. [□□□ □□□ □□ □□ □□□□ □□□ □□ □□ □□ □□□□ □□□ □ □□□□.](#)

□□

1. □□□ □□ □ □□□ □□□□□□□ □□
2. □□ □ □ □ □□ □□ □□□ □□ □□
3. □□, □□□ □, □□ □□ □ □□□ □□ □□ □□

Machine	Paper Spec	Core Spec
MINAMI	270mm*6m	Plastic, φ8mm, 290mm
EKRA	300mm*7m	Paper, φ13.5mm, 400mm
	400mm*7m	Paper, φ13.5mm, 400mm
MPM	250mm*10m	Paper, φ19.5mm, 455mm
	300mm*10m	Paper, φ19.5mm, 455mm
	450mm*10m	Paper, φ19.5mm, 455mm
Samsung	400mm*10m	Plastic, φ20mm, 460mm
	400mm*10m	Plastic, φ20mm, 350mm
SONY	260mm*20m	Plastic, φ20mm, 280mm
	260mm*17m	Plastic, φ20mm, 280mm
DEK	400mm*9m	Plastic, φ20mm, 530mm
	490mm*9m	Plastic, φ20mm, 530mm
	510mm*10m	Plastic, φ20mm, 530mm
YAMAHA	350mm*15m	Paper, φ25.5mm*360mm
	420mm*20m	Paper, φ25.5mm*420mm
	400mm*20m	Paper, φ25.5mm*420mm

☐☐ ☐☐ **smt** ☐☐☐ ☐☐ ☐☐☐☐ ☐





# SMT Stencil Roll Material

55% wood pulp & 45% polyester



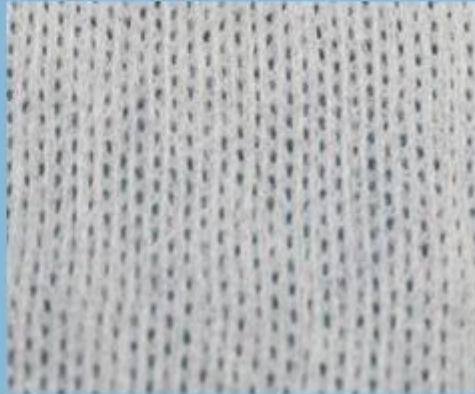
viscose & polyester / parallel



100% polypropylene



viscose & polyester / mesh





# YICHEN

DIGITAL PRODUCTS FACTORY



Our Team



Factory





## Trade Assurance

**TRADE WITH CONFIDENCE,  
CREDIBLE AND RELIABLE**

Your payment is protected 100% of the Trade Assurance Order Amount if the product quality is not to your satisfaction or if the order is not shipped on time.





#### About customer service

If your inquiry didn't be replied in time, maybe because of large amount of consulting, please wait patiently, or maybe system problems, your inquiry was lost etc. If the time is too long, Please contact other lights on customer service, or login back Wangwang, then consult, please forgive any inconvenient by this.



#### About after-sale

In the process of selling, if clients find quality problems in products, clients can note us, we'll take great care in performing this matter, the cost paid by us; if we find serious quality problems and can't be remedy, clients have right to return quality problems products to us, we must return the cost of the products.



#### About shipping

Sample lead time: 1-3 days; Mass order production: 7-12 days or negotiated . (By air or by sea depends on clients' choice)



**Tel:** 86-512-50313419  
**Mob:** 86-15895659543  
**Fax:** 86-512-57336236  
**Email:** yc@yichenwipe.cn

[Contact Us](#)  
[Go to the home](#)

**WELCOME TO VISIT OUR FACTORY!**