

Tissu non-tissé de spunlace pour la machine d'impression [Rouleau de papier de nettoyage de pochoir SMT](#)

Détails du produit

Matériel	55% bois + 45% polyester
Taille	Que votre demande
Poids	56gsm, 68gsm
Couleur	Blanc
Style	Roll
MOQ	100 rouleaux
Échantillon	Échantillon gratuit
Port	Port de Shanghai

Fonctionnalité

1. [55% pulpe de bois et tissu polyester 45%](#)
2. absorbant élevé et doux, sans éraflure sur la carte de PCB
3. Tough et anti-pull
4. Nettoyez et enlevez la pâte de soudure rapidement, améliorez l'efficacité de travail
5. [Faible en charpie](#)
6. disponible dans différentes tailles et types pour adapter différents modèles d'imprimantes, OEM

Application

1. lingettes sans charpie dans l'industrie électronique et laboratoire purifié
2. fabrication d'équipements optiques, production de fibre légère
3. impression industrielle SMT acier nette essuyage et équipements précis essuyant
4. transformation des aliments et secteur médical

Spunlace non-tissé de tissu pour la machine d'impression SMT pochoir rouleau de papier de nettoyage





SMT Stencil Roll Material

55% wood pulp & 45% polyester



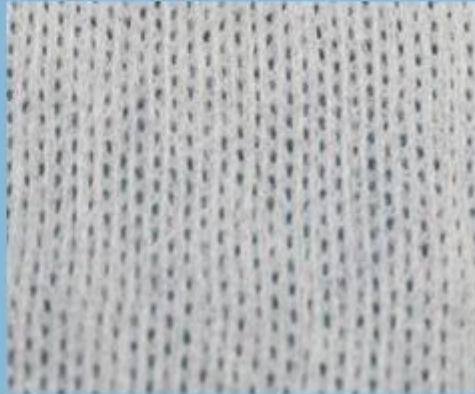
viscose & polyester / parallel



100% polypropylene

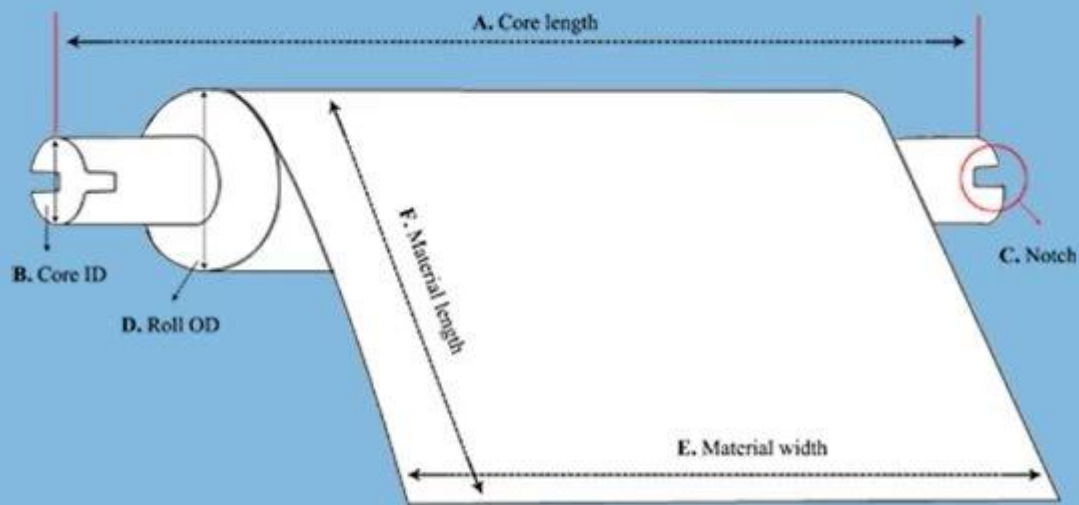


viscose & polyester / mesh



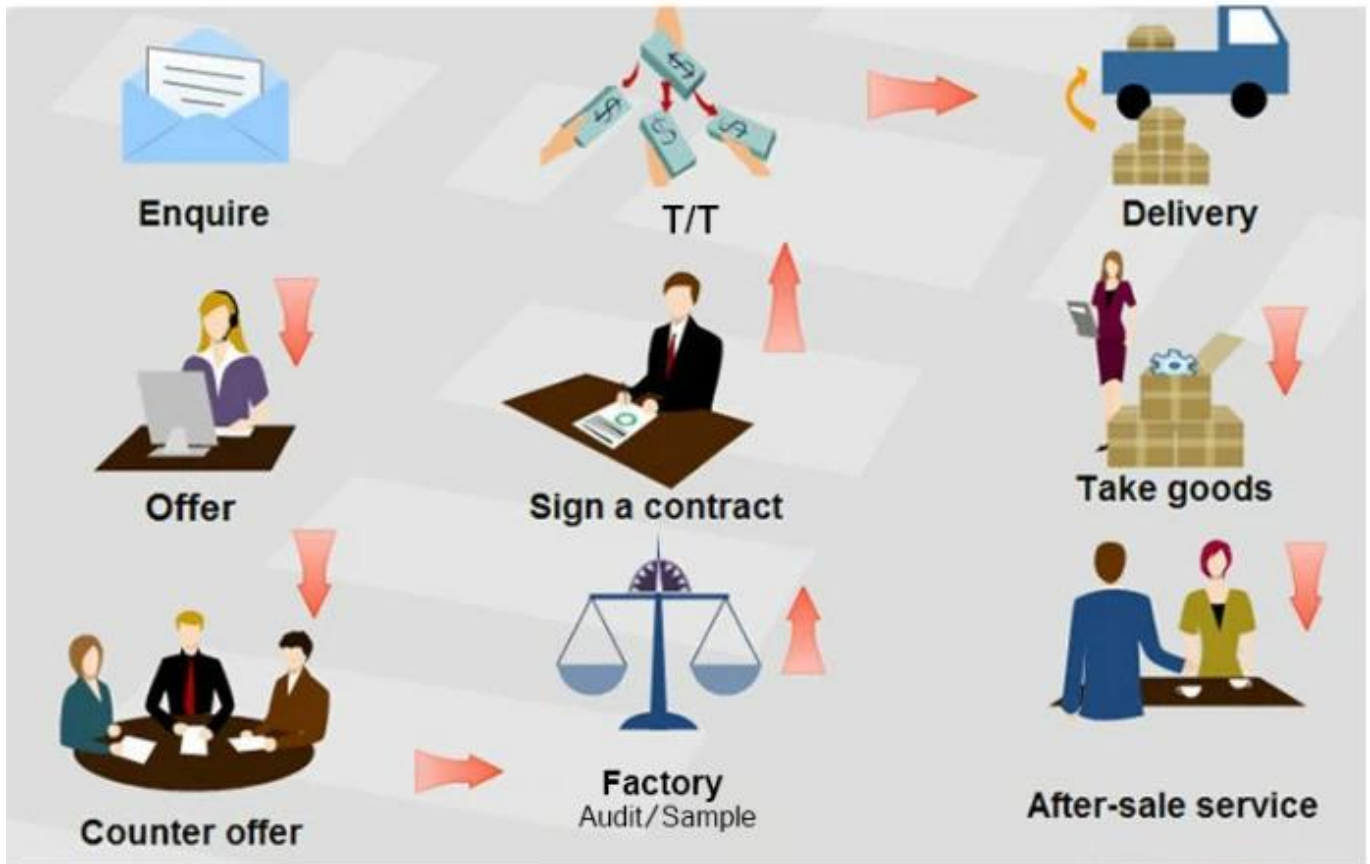


Custom SMT Stencil Roll Specification



- A. Core Length
- B. Core Inner Diameter
- C. With Notch or not
- D. Roll outer diameter
- E. Material Width
- F. Material Length





Trade Assurance

**TRADE WITH CONFIDENCE,
CREDIBLE AND RELIABLE**

Your payment is protected 100% of the Trade Assurance Order Amount if the product quality is not to your satisfaction or if the order is not shipped on time.





About customer service

If your inquiry didn't be replied in time, maybe because of large amount of consulting, please wait patiently, or maybe system problems, your inquiry was lost etc. If the time is too long, Please contact other lights on customer service, or login back Wangwang, then consult, please forgive any inconvenient by this.



About after-sale

In the process of selling, if clients find quality problems in products, clients can note us, we'll take great care in performing this matter, the cost paid by us; if we find serious quality problems and can't be remedy, clients have right to return quality problems products to us, we must return the cost of the products.



About shipping

Sample lead time: 1-3 days; Mass order production: 7-12 days or negotiated . (By air or by sea depends on clients' choice)



Tel: 86-512-50313419
Mob: 86-15895659543
Fax: 86-512-57336236
Email: yc@yichenwipe.cn

[Contact Us](#)
[Go to the home](#)

WELCOME TO VISIT OUR FACTORY!