

Respectueux de l'environnement SMT pochoir non tissé [Rouleau de tissu de nettoyage](#)

Description du produit

Matériel	pâte de bois 55 % + 45 % polyester
Poids	50-68gsm
Couleur	Blanc
Taille	Selon vos besoins
Rouleau	Papier ou en plastique de pipe
Machine disponible	Comme Heidelberg, Ryobi, Komorim etc...

Fonctionnalité

1. [Peluches faible](#), génération de particules de faible
2. déchirure résistante, [très solide et durable](#)
3. très absorbante pour eau, huile et graisse, idéal pour l'absorption de colle, solvants et colles
4. solvant résistante, peut être utilisé avec n'importe quel type de solvant de nettoyage
5. plus haute résistance à la traction et la résistance à l'abrasion
6. impression de gant de toilette tels que petits pains adapté aux types de machines d'impression offset: Heidelberg, Ryobi, Mitsubishi, Komori, Sakurai

Application

Printer machine	Wipe (Width* length)	Core (Inner diameter* width)
Panasonic	350mm*20m	38mm*355mm
	360mm*10m	38mm*360mm
	270mm*10m	38mm*280mm
Yamaha	410mm*30m	25.5mm*420mm
	350mm*10m	25.5mm*350mm
Minami	270mm*5m	8mm*290mm
	350mm*6m	8mm*370mm
Ekra	300mm*8m	13.5mm*300mm
	450mm*8m	13.5mm*450mm
Aska	350mm*10m	14mm*450mm
	430mm*10m	14mm*450mm
MPM	300mm*10m	19.5mm*455mm
	443mm*10m	19.5mm*455mm
	600mm*10m	19.5mm*615mm
Dek	300mm*10m	20mm*530mm
	500mm*10m	20mm*530mm
Samsung	400mm*7m	20mm*460mm

Nous fournissons différents rouleaux SMT pour s'adapter à diverses machines d'impression, tels que DEK, MPM, DANYO, EKRA, MINAMI, PANASANT, Fuji, MPM et autres imprimantes. Le matériau est également utilisé dans les semi-conducteurs, produits optiques, PCB production, Automotive, production de téléphone portable et équipement médical.

Respectueux de l'environnement SMT pochoir non tissé rouleau de tissu de nettoyage





SMT Stencil Roll Material

55% wood pulp & 45% polyester



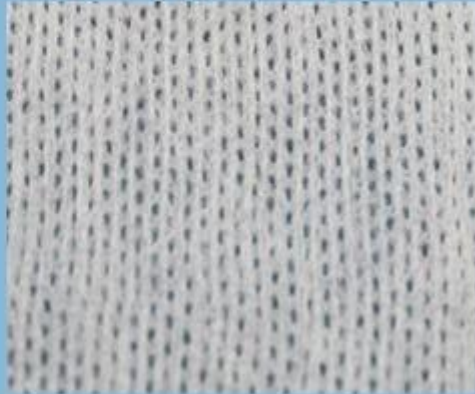
viscose & polyester / parallel



100% polypropylene

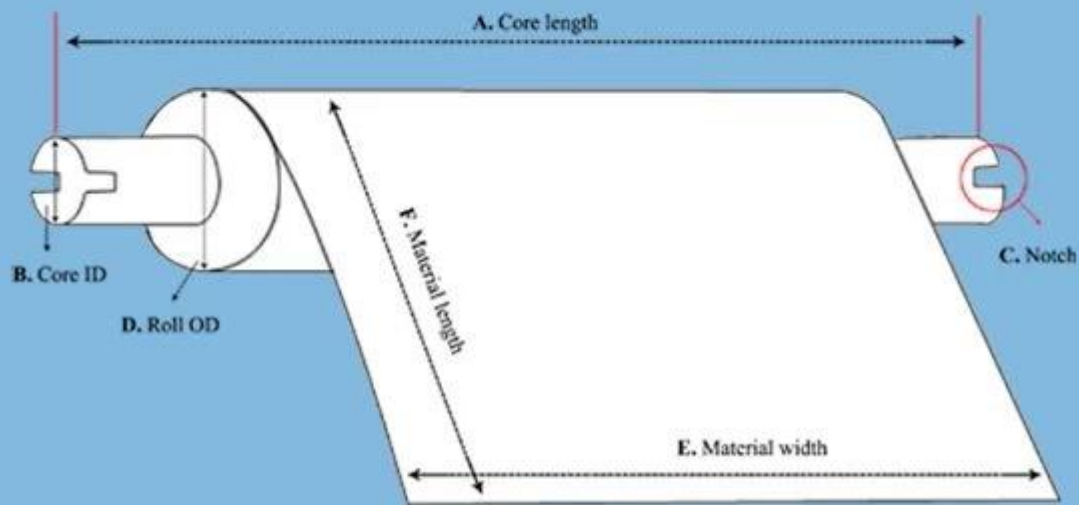


viscose & polyester / mesh



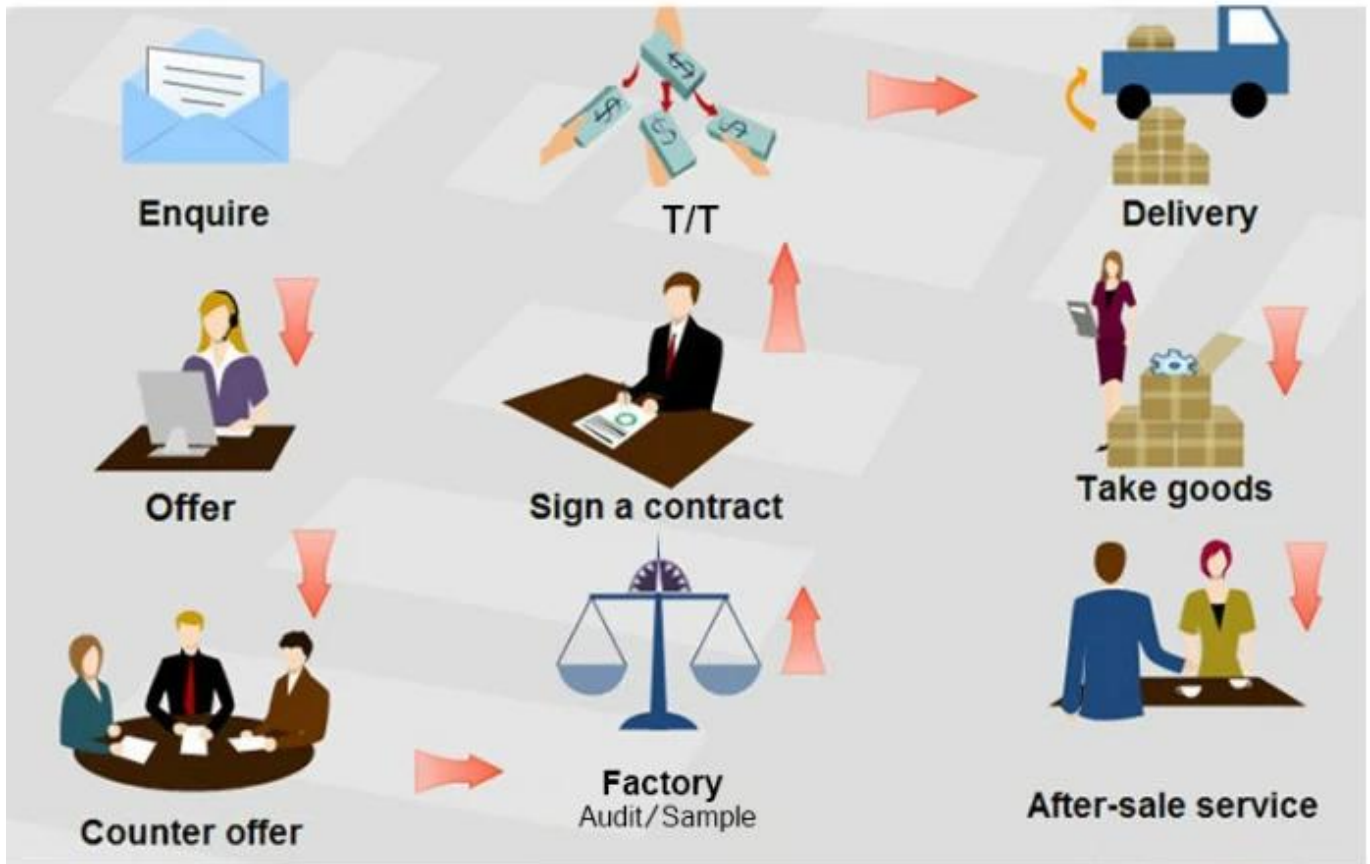


Custom SMT Stencil Roll Specification



- A. Core Length
- B. Core Inner Diameter
- C. With Notch or not
- D. Roll outer diameter
- E. Material Width
- F. Material Length





Trade Assurance

**TRADE WITH CONFIDENCE,
CREDIBLE AND RELIABLE**

Your payment is protected 100% of the Trade Assurance Order Amount if the product quality is not to your satisfaction or if the order is not shipped on time.





About customer service

If your inquiry didn't be replied in time, maybe because of large amount of consulting, please wait patiently, or maybe system problems, your inquiry was lost etc. If the time is too long, Please contact other lights on customer service, or login back Wangwang, then consult, please forgive any inconvenient by this.



About after-sale

In the process of selling, if clients find quality problems in products, clients can note us, we'll take great care in performing this matter, the cost paid by us; if we find serious quality problems and can't be remedy, clients have right to return quality problems products to us, we must return the cost of the products.



About shipping

Sample lead time: 1-3 days; Mass order production: 7-12 days or negotiated . (By air or by sea depends on clients' choice)



Tel: 86-512-50313419
Mob: 86-15895659543
Fax: 86-512-57336236
Email: yc@yichenwipe.cn

[Contact Us](#)
[Go to the home](#)

WELCOME TO VISIT OUR FACTORY!