

## Eco-Friendly SMT Stencil Vlies Reinigungs Tuch Roll

### Produktbeschreibung

Material	55 % Zellstoff + 45 % polyester
Gewicht	50-68gsm
Farbe	Weiß
Größe	Nach Ihren Bedürfnissen
Roll	Papier oder Kunststoff-Rohr
Verfügbare Maschine	Wie Heidelberger, Ryobi, Komorim etc....

### Funktion

1. Niedrige-Flusen, geringe Partikelerzeugung
- (2) Abnutzung beständig, sehr stark und haltbar
3. sehr saugfähig für Wasser, Öl und Fett, Ideal für die Absorption von einfügen, Lösungsmittel und Klebstoffe
- (4) Lösungsmittel beständig, kann zusammen mit jeder Art von Reinigung Lösungsmittel verwendet werden
5. höhere Zug- und Abriebfestigkeit
6. Drucken Waschlappen rollt wie z. B. geeignet für Offset-Druckmaschinen: Heidelberg, Ryobi, Komori, Mitsubishi, Sakurai

### Anwendung

<b>Printer machine</b>	<b>Wipe (Width* length)</b>	<b>Core (Inner diameter* width)</b>
Panasonic	350mm*20m	38mm*355mm
	360mm*10m	38mm*360mm
	270mm*10m	38mm*280mm
Yamaha	410mm*30m	25.5mm*420mm
	350mm*10m	25.5mm*350mm
Minami	270mm*5m	8mm*290mm
	350mm*6m	8mm*370mm
Ekra	300mm*8m	13.5mm*300mm
	450mm*8m	13.5mm*450mm
Aska	350mm*10m	14mm*450mm
	430mm*10m	14mm*450mm
MPM	300mm*10m	19.5mm*455mm
	443mm*10m	19.5mm*455mm
	600mm*10m	19.5mm*615mm
Dek	300mm*10m	20mm*530mm
	500mm*10m	20mm*530mm
Samsung	400mm*7m	20mm*460mm

Wir liefern verschiedene SMT Rollen verschiedene Druckmaschinen wie DEK, MPM, DANYO, EKRA, MINAMI, PANASENT, Fuji, MPM und andere Drucker angepasst. Das Material ist auch in Halbleiter, optische Produkte, PCB-Produktion, Automotive, Handy-Produktion und medizinische Geräte verwendet.

Eco-Friendly SMT Stencil Vlies Reinigung Tuch Roll





# SMT Stencil Roll Material

55% wood pulp & 45% polyester



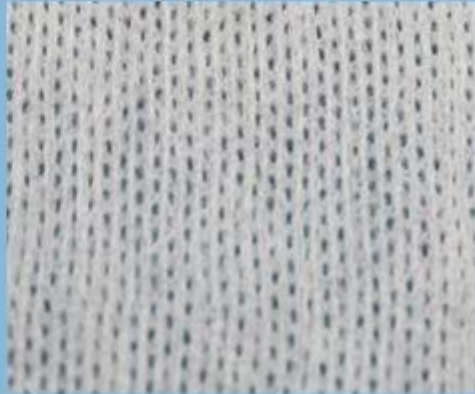
viscose & polyester / parallel



100% polypropylene

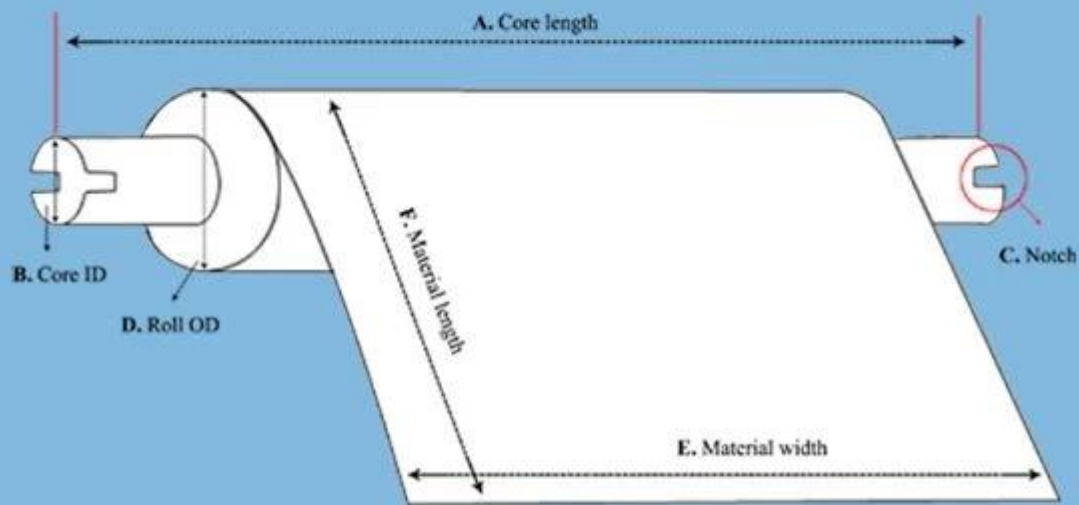


viscose & polyester / mesh





## Custom SMT Stencil Roll Specification



- A. Core Length
- B. Core Inner Diameter
- C. With Notch or not
- D. Roll outer diameter
- E. Material Width
- F. Material Length





# YICHEN

DIGITAL PRODUCTS FACTORY

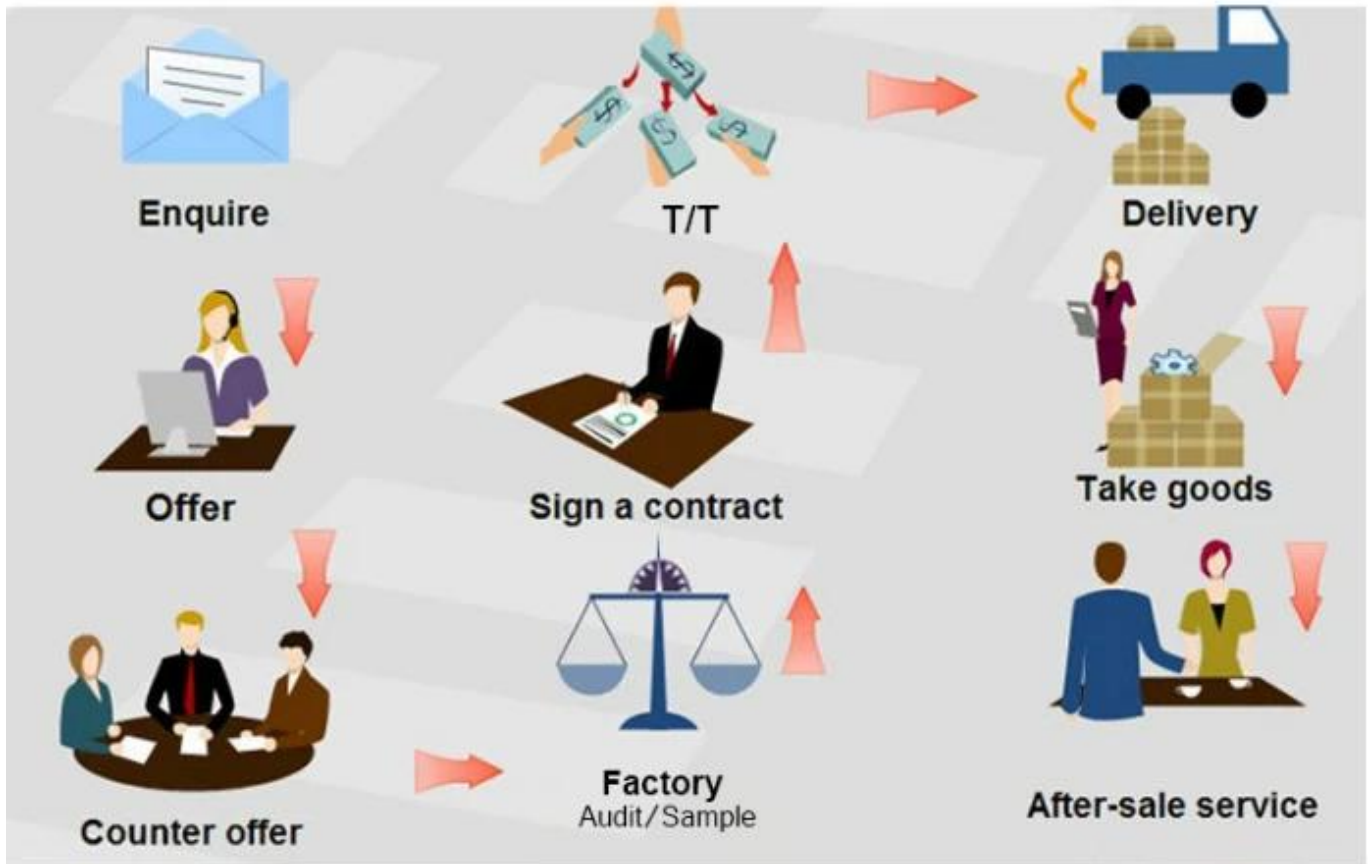



Our Team



Factory





## Trade Assurance

**TRADE WITH CONFIDENCE,  
CREDIBLE AND RELIABLE**

Your payment is protected 100% of the Trade Assurance Order Amount if the product quality is not to your satisfaction or if the order is not shipped on time.







#### About customer service

If your inquiry didn't be replied in time, maybe because of large amount of consulting, please wait patiently, or maybe system problems, your inquiry was lost etc. If the time is too long, Please contact other lights on customer service, or login back Wangwang, then consult, please forgive any inconvenient by this.



#### About after-sale

In the process of selling, if clients find quality problems in products, clients can note us, we'll take great care in performing this matter, the cost paid by us; if we find serious quality problems and can't be remedy, clients have right to return quality problems products to us, we must return the cost of the products.



#### About shipping

Sample lead time: 1-3 days; Mass order production: 7-12 days or negotiated . (By air or by sea depends on clients' choice)



**Tel:** 86-512-50313419  
**Mob:** 86-15895659543  
**Fax:** 86-512-57336236  
**Email:** yc@yichenwipe.cn

[Contact Us](#)  
[Go to the home](#)

**WELCOME TO VISIT OUR FACTORY!**