

PCB 製造に Stencil SMT を採用する理由

理由

材料	woodpulp 55% + 再生紙 45%
厚み	0.4mm
表面処理	銅めっき
寸法	最大 1000mm x 1000mm
重量	56gsm, 68gsm
生産速度	高速印刷/カット
廃棄物	少ない
コスト	削減

結論

1. 環境に優しい材料を使用
2. 生産コストを削減
3. SMT 製造に最適な材料で、高品質な PCB を生産

PCB 製造に Stencil SMT を採用する理由

4. [PCB 製造に Stencil SMT を採用する理由](#)

お問い合わせ

1. お問い合わせ先 - 株式会社 〇〇〇
2. お問い合わせ先 - 株式会社 〇〇〇
3. お問い合わせ先 - 株式会社 〇〇〇 paintwork

Machine	Paper Spec	Core Spec
MINAMI	270mm*6m	Plastic, φ8mm, 290mm
EKRA	300mm*7m	Paper, φ13.5mm, 400mm
	400mm*7m	Paper, φ13.5mm, 400mm
MPM	250mm*10m	Paper, φ19.5mm, 455mm
	300mm*10m	Paper, φ19.5mm, 455mm
	450mm*10m	Paper, φ19.5mm, 455mm
Samsung	400mm*10m	Plastic, φ20mm, 460mm
	400mm*10m	Plastic, φ20mm, 350mm
SONY	260mm*20m	Plastic, φ20mm, 280mm
	260mm*17m	Plastic, φ20mm, 280mm
DEK	400mm*9m	Plastic, φ20mm, 530mm
	490mm*9m	Plastic, φ20mm, 530mm
	510mm*10m	Plastic, φ20mm, 530mm
YAMAHA	350mm*15m	Paper, φ25.5mm*360mm
	420mm*20m	Paper, φ25.5mm*420mm
	400mm*20m	Paper, φ25.5mm*420mm

☐☐☐☐☐☐☐☐☐ **SMT Stencil** ☐☐☐☐☐☐☐☐☐☐☐☐☐☐☐





SMT Stencil Roll Material

55% wood pulp & 45% polyester



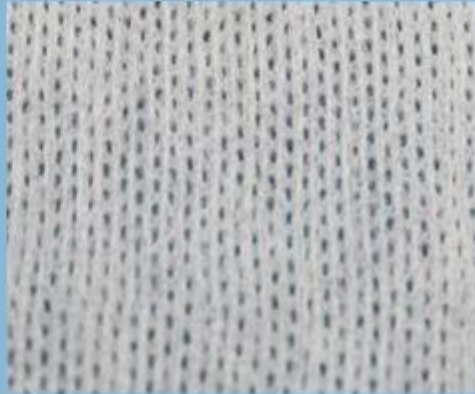
viscose & polyester / parallel



100% polypropylene



viscose & polyester / mesh





YICHEN

DIGITAL PRODUCTS FACTORY



Our Team



Factory





Trade Assurance

**TRADE WITH CONFIDENCE,
CREDIBLE AND RELIABLE**

Your payment is protected 100% of the Trade Assurance Order Amount if the product quality is not to your satisfaction or if the order is not shipped on time.





About customer service

If your inquiry didn't be replied in time, maybe because of large amount of consulting, please wait patiently, or maybe system problems, your inquiry was lost etc. If the time is too long, Please contact other lights on customer service, or login back Wangwang, then consult, please forgive any inconvenient by this.



About after-sale

In the process of selling, if clients find quality problems in products, clients can note us, we'll take great care in performing this matter, the cost paid by us; if we find serious quality problems and can't be remedy, clients have right to return quality problems products to us, we must return the cost of the products.



About shipping

Sample lead time: 1-3 days; Mass order production: 7-12 days or negotiated . (By air or by sea depends on clients' choice)



Tel: 86-512-50313419
Mob: 86-15895659543
Fax: 86-512-57336236
Email: yc@yichenwipe.cn

[Contact Us](#)

[Go to the home](#)

WELCOME TO VISIT OUR FACTORY!