

**55% celulose + 45% poliéster** Laminado não tecida SMT limpeza rolo estêncil Wipe

#### Detalhes do produto

Material	55%Poliéster de celulose + 45%
Peso	68gsm
Tamanho	Como sua demanda
Cor	Branco
Núcleo	Plástico/papel
MOQ	100 rolos
Amostra	Amostra grátis
Porto	Porto de Shanghai

#### Recurso

- 1 [Absorvente elevado](#)
2. suavidade
3. Tough e anti-pull
4. Clean e execute bem
5. anti-estático
6. size e o pacote podem ser personalizados como sua exigência
- 7 [Apropriado às máquinas diferentes da impressão de SMT](#)

#### Aplicativo

1. toalhetes sem fiapos na indústria electrónica e laboratório purificado
2. equipamentos óticos que manufaturam, produção da fibra clara
3. Printing industrial que limpa a rede de aço de SMT e equipamentos precisos que limpam
4. processamento de alimentos e área médica
5. Manufacturing mecanicamente

**55% celulose + 45% poliéster laminado não tecido SMT limpeza do estêncil Wipe roll**





# SMT Stencil Roll Material

55% wood pulp & 45% polyester



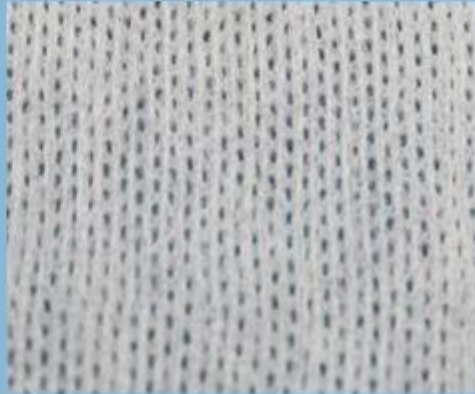
viscose & polyester / parallel



100% polypropylene



viscose & polyester / mesh





# YICHEN

DIGITAL PRODUCTS FACTORY



Our Team



Factory





## Trade Assurance

**TRADE WITH CONFIDENCE,  
CREDIBLE AND RELIABLE**

Your payment is protected 100% of the Trade Assurance Order Amount if the product quality is not to your satisfaction or if the order is not shipped on time.





#### About customer service

If your inquiry didn't be replied in time, maybe because of large amount of consulting, please wait patiently, or maybe system problems, your inquiry was lost etc. If the time is too long, Please contact other lights on customer service, or login back Wangwang, then consult, please forgive any inconvenient by this.



#### About after-sale

In the process of selling, if clients find quality problems in products, clients can note us, we'll take great care in performing this matter, the cost paid by us; if we find serious quality problems and can't be remedy, clients have right to return quality problems products to us, we must return the cost of the products.



#### About shipping

Sample lead time: 1-3 days; Mass order production: 7-12 days or negotiated . (By air or by sea depends on clients' choice)



**Tel:** 86-512-50313419  
**Mob:** 86-15895659543  
**Fax:** 86-512-57336236  
**Email:** yc@yichenwipe.cn

[Contact Us](#)  
[Go to the home](#)

**WELCOME TO VISIT OUR FACTORY!**