

SMT respetuoso del medio ambiente de la plantilla no tejida [Rollo de paño de limpieza](#)

## Descripción del producto

Material	55% celulosa y 45% poliéster
Peso	50-68gsm
Color	Blanco
Tamaño	Según sus necesidades
Rodillo	Papel o plástico de la pipa
Máquina disponible	Como el Heidelberg, Ryobi, Komorim etcetera...

## Característica

1. [Pelusa baja](#), generación de partículas bajo
2. rasgón resistente, [muy fuerte y durable](#)
3. muy absorbente de agua, aceite y grasa, ideal para la absorción de la goma, solventes y adhesivos
4. solvente resistente, puede utilizarse junto con cualquier tipo de disolvente de limpieza
- 5 mayor resistencia a la tracción y resistencia a la abrasión
6. paño de la colada de impresión rollos como conveniente para las clases de máquinas de impresión offset: Heidelberg, Ryobi, Mitsubishi, Komori, Sakurai

## Aplicación

<b>Printer machine</b>	<b>Wipe (Width* length)</b>	<b>Core (Inner diameter* width)</b>
Panasonic	350mm*20m	38mm*355mm
	360mm*10m	38mm*360mm
	270mm*10m	38mm*280mm
Yamaha	410mm*30m	25.5mm*420mm
	350mm*10m	25.5mm*350mm
Minami	270mm*5m	8mm*290mm
	350mm*6m	8mm*370mm
Ekra	300mm*8m	13.5mm*300mm
	450mm*8m	13.5mm*450mm
Aska	350mm*10m	14mm*450mm
	430mm*10m	14mm*450mm
MPM	300mm*10m	19.5mm*455mm
	443mm*10m	19.5mm*455mm
	600mm*10m	19.5mm*615mm
Dek	300mm*10m	20mm*530mm
	500mm*10m	20mm*530mm
Samsung	400mm*7m	20mm*460mm

Suministramos rollos SMT diferentes para adaptarse a diferentes máquinas de impresión, como DEK, MPM, DANYO, EKRA, MINAMI, PANASENT, Fuji, MPM y otras impresoras. El material también se utiliza en semiconductores, productos ópticos, producción de PCB, autotomotive, producción de teléfono móvil y equipo médico.

Respetuoso del medio ambiente SMT plantilla no tejida rollo de paño de limpieza





# SMT Stencil Roll Material

55% wood pulp & 45% polyester



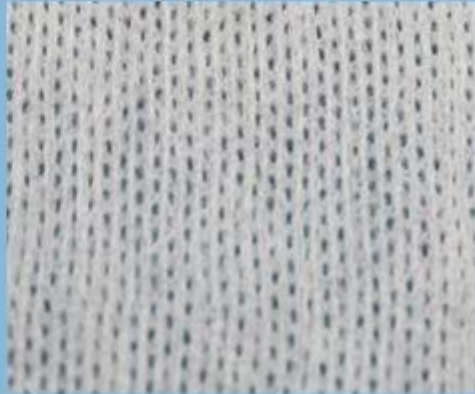
viscose & polyester / parallel



100% polypropylene

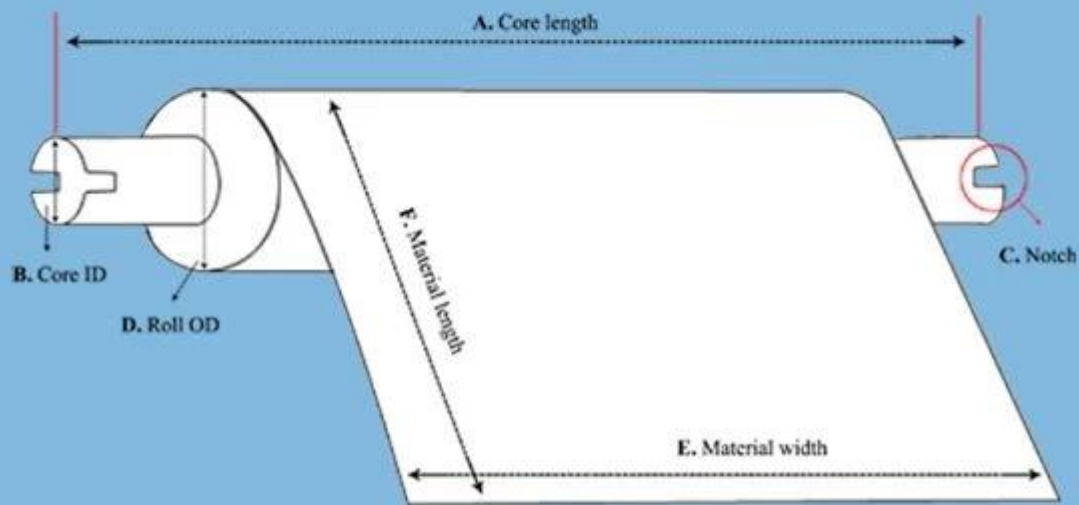


viscose & polyester / mesh





## Custom SMT Stencil Roll Specification



- A. Core Length
- B. Core Inner Diameter
- C. With Notch or not
- D. Roll outer diameter
- E. Material Width
- F. Material Length





# YICHEN

DIGITAL PRODUCTS FACTORY

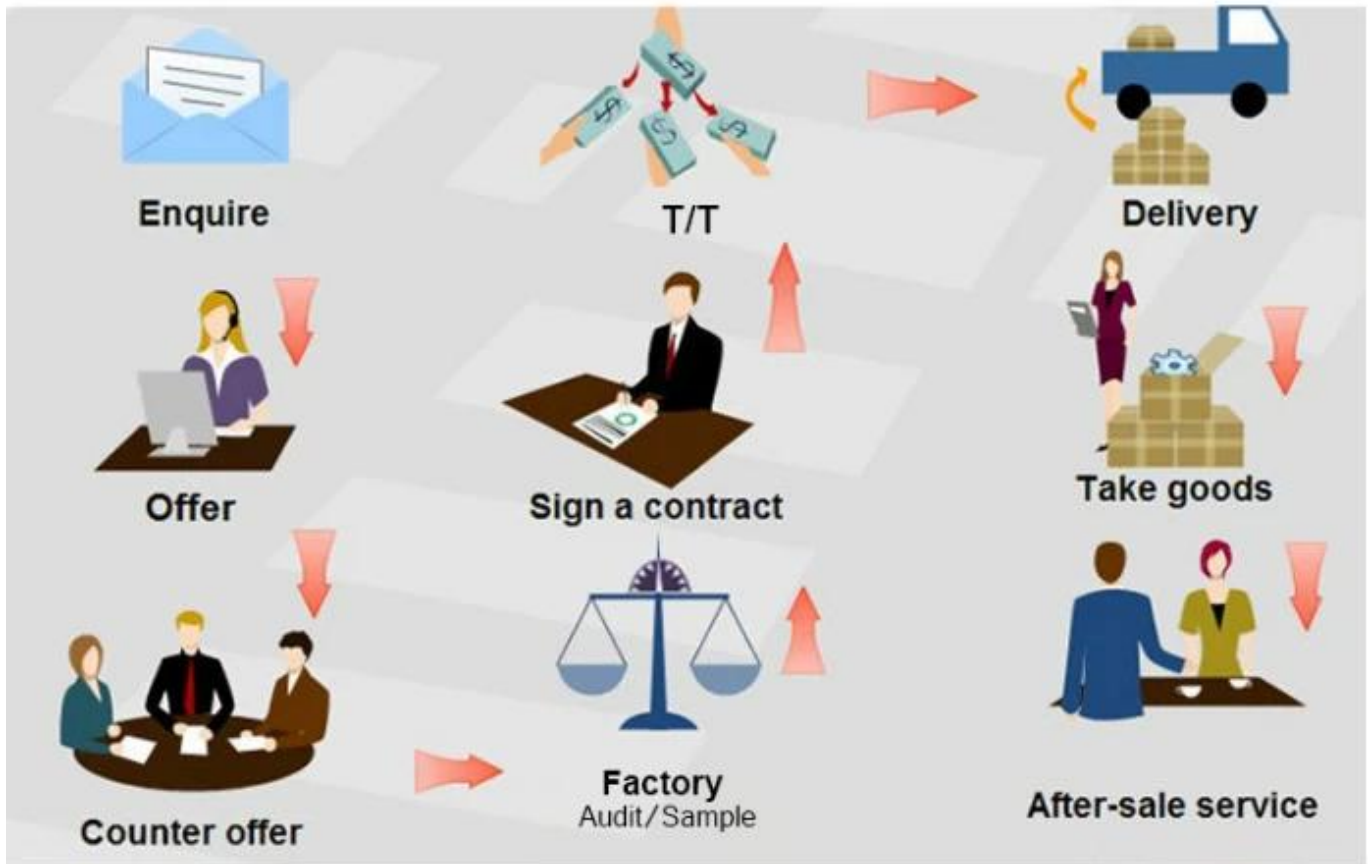


Our Team



Factory





## Trade Assurance

**TRADE WITH CONFIDENCE,  
CREDIBLE AND RELIABLE**

Your payment is protected 100% of the Trade Assurance Order Amount if the product quality is not to your satisfaction or if the order is not shipped on time.







#### About customer service

If your inquiry didn't be replied in time, maybe because of large amount of consulting, please wait patiently, or maybe system problems, your inquiry was lost etc. If the time is too long, Please contact other lights on customer service, or login back Wangwang, then consult, please forgive any inconvenient by this.



#### About after-sale

In the process of selling, if clients find quality problems in products, clients can note us, we'll take great care in performing this matter, the cost paid by us; if we find serious quality problems and can't be remedy, clients have right to return quality problems products to us, we must return the cost of the products.



#### About shipping

Sample lead time: 1-3 days; Mass order production: 7-12 days or negotiated . (By air or by sea depends on clients' choice)



**Tel:** 86-512-50313419  
**Mob:** 86-15895659543  
**Fax:** 86-512-57336236  
**Email:** yc@yichenwipe.cn

[Contact Us](#)  
[Go to the home](#)

**WELCOME TO VISIT OUR FACTORY!**