

55%□□□ 45%□□ Smt □□□□□□

□□□□□□

□□	55%□□□□ 45%□□ Smt □□□□□□
□□	55%□□ + 45%□□
□□□□	□□□□□□□□□□
□□	□□□□□□
□□	□□
□□	50gsm□56gsm 68gsm
□	PVC □□□□□□□□
OEM	□□□ □□□ □□□□
□□	□□

□□

- 1□ □□□□□□ □□□
- 2.□□□□□□□□ □□ absorbenct □□□□□□□□□□
- 3.□□□□□□□□□□□□ □□□□□ □□□□
- 4.□□□□□□□□□□□□□□□□
- 5.□□□□□□ □□□□□□□□□ □□□ □□□□□□ □□□ □□□□□□□□□□

□□□□

□□□ GKG□ MPM DEK□ JUKI□ □□□□ □□□ ASKA□ □□□ □□□□ □□ SMT □□□□□□□□□□□...

□□□□□□ SMT □□□□□□

□□	□□□□ □□□)	□□□□ □□□)	□□ ID(cm)	□□ □m□	□□□□
□□□	360	360	25.5	12	CP-02
□□	500	500	26	15	□
□□□	400	400	12	8	□□
KME	480	480	38	18	□
JUKI	270	260	38	15	□
□□	280	280	38	8	CP-02
□□	360	350	38	28	□
SAMTCH	300	300	13.5	7	□□
□□	260	280	20	20	Plasyic/□□ 2side

55%□□□□ 45%□□ Smt □□□□□□





SMT Stencil Roll Material

55% wood pulp & 45% polyester



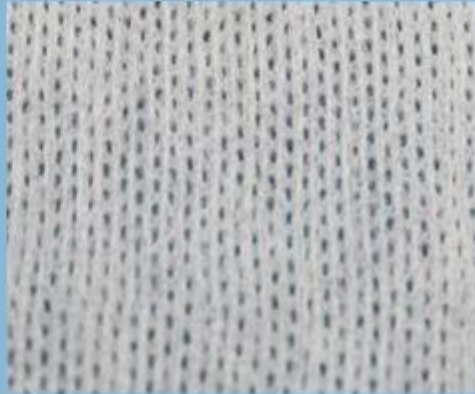
viscose & polyester / parallel



100% polypropylene

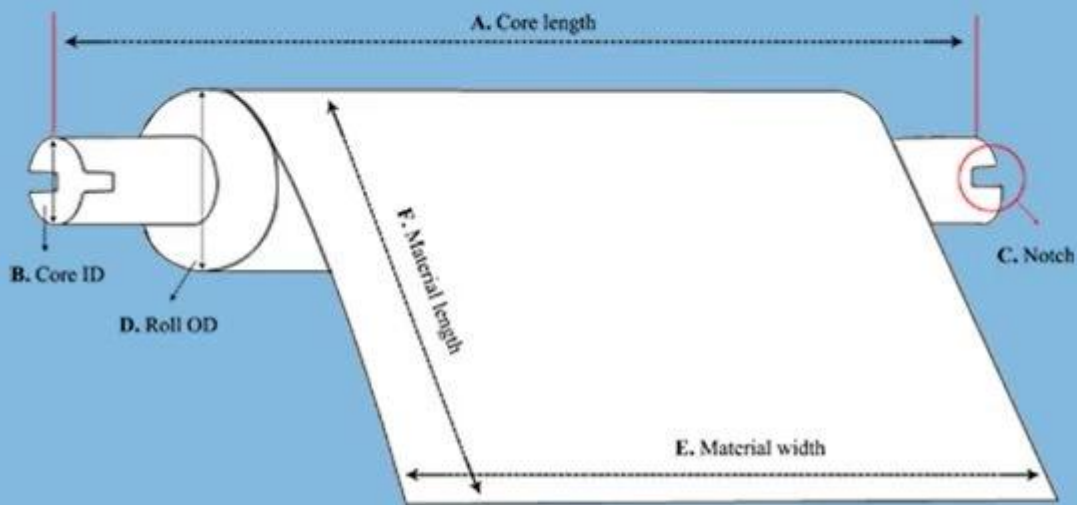


viscose & polyester / mesh





Custom SMT Stencil Roll Specification



- A. Core Length
- B. Core Inner Diameter
- C. With Notch or not
- D. Roll outer diameter
- E. Material Width
- F. Material Length



YICHEN

DIGITAL PRODUCTS FACTORY



Our Team



Factory





Trade Assurance

**TRADE WITH CONFIDENCE,
CREDIBLE AND RELIABLE**

Your payment is protected 100% of the Trade Assurance Order Amount if the product quality is not to your satisfaction or if the order is not shipped on time.





About customer service

If your inquiry didn't be replied in time, maybe because of large amount of consulting, please wait patiently, or maybe system problems, your inquiry was lost etc. If the time is too long, Please contact other lights on customer service, or login back Wangwang, then consult, please forgive any inconvenient by this.



About after-sale

In the process of selling, if clients find quality problems in products, clients can note us, we'll take great care in performing this matter, the cost paid by us; if we find serious quality problems and can't be remedy, clients have right to return quality problems products to us, we must return the cost of the products.



About shipping

Sample lead time: 1-3 days; Mass order production: 7-12 days or negotiated . (By air or by sea depends on clients' choice)



Tel: 86-512-50313419
Mob: 86-15895659543
Fax: 86-512-57336236
Email: yc@yichenwipe.cn

[Contact Us](#)

[Go to the home](#)

WELCOME TO VISIT OUR FACTORY!